

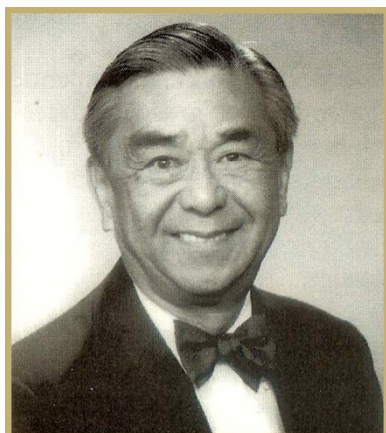
Honolulu Chapter CSI

HONOLULU CHAPTER CSI ENDOWED SCHOLARSHIP FOR THE SCHOOL OF ARCHITECTURE

REASON FOR THE GIFT

By establishing this Fund, Donor is providing perpetual funding for the Gilman Hu Honolulu Chapter CSI Endowed Scholarship for the School of Architecture, which shall provide scholarships to students enrolled at the University of Hawai'i at Mānoa School of Architecture.

ABOUT THE HONOREE



Gilman K. M. Hu, FCSI, AIA is a retired architect who was in private practice in Honolulu, Hawai'i. In July 2008 he was named president of the Construction Specifications Institute (CSI) in Alexandria, Virginia, and became the first president to come from the Honolulu CSI Chapter. Born in China, he was also the first Asian-American CSI president.

Hu joined CSI in 1967 as a charter member of the Honolulu chapter. He had served in nearly every CSI leadership position since joining, from Honolulu Chapter president to West Region Conference chairman to vice president-professional on the national level. He has been a member of the national Awards Committee, Nominating Committee and Jury of Fellows.

In 1994, CSI presented the president's plaque to Hu for his exceptional work performed on behalf of the Institute. The following year, CSI elevated him to fellowship, one of the institute's top honors. He founded and published *The Fellows* newsletter, a publication for CSI fellows, and has been lauded for his work on improving the CSI membership experience.

He earned his Bachelor of Architecture from Washington University in St. Louis, Missouri. He is also a Member Emeritus of the American Institute of Architects.

ABOUT THE DONOR

The Honolulu Chapter CSI was formed in 1967 with its mission to advance building information management and education to promote quality construction project delivery. As an industry-wide organization with 150 members of diversified construction professionals in Hawai'i, they create a broad learning opportunity for all segments of the construction project team. Through their dinner programs, site visits, certification classes and scholarships given to the local institutions of higher learning, they provide students and professionals with the ability to expand their knowledge and make lasting contacts in the local construction industry. With a focus on architecture, engineering, construction management and product representation they ensure a high standard of professionalism in construction that provides future generations with a comfortable, safe living environment in the State of Hawai'i.